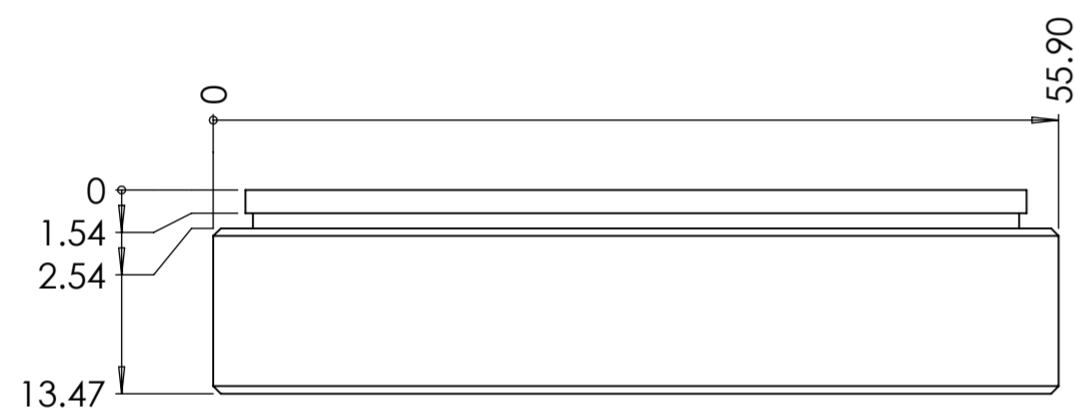
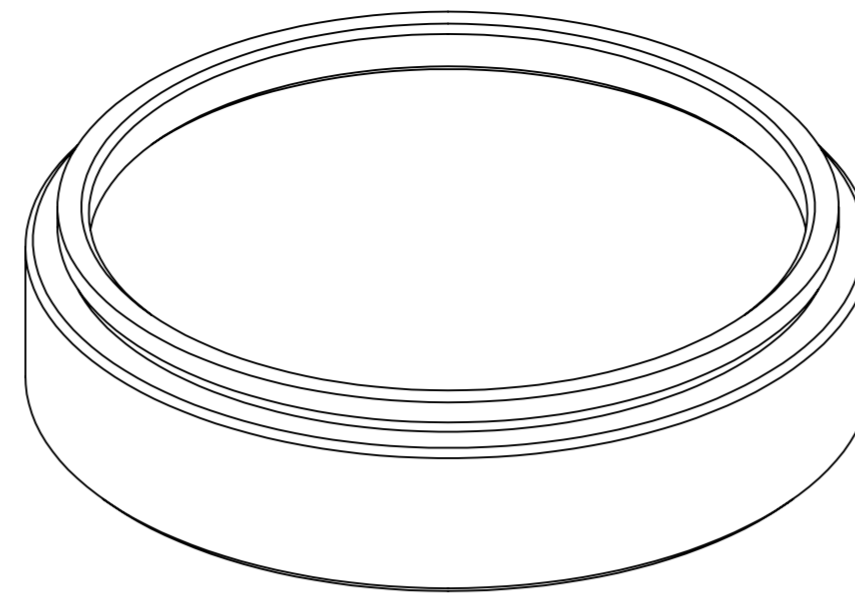
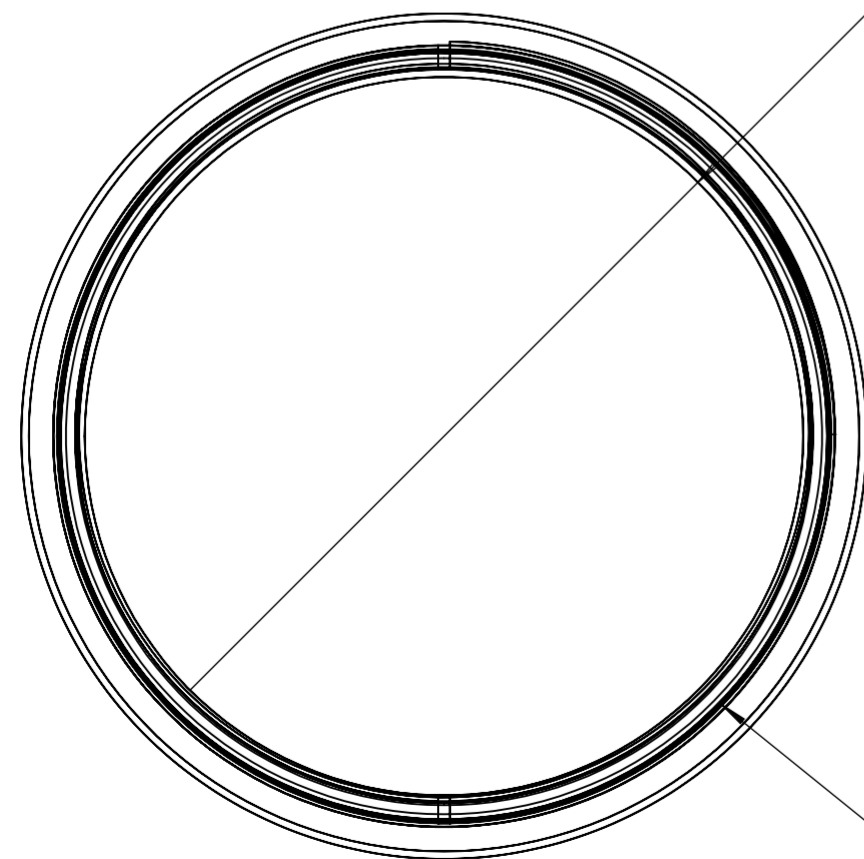


BACK

Back Thread: 2.035"-40 UNS THRU



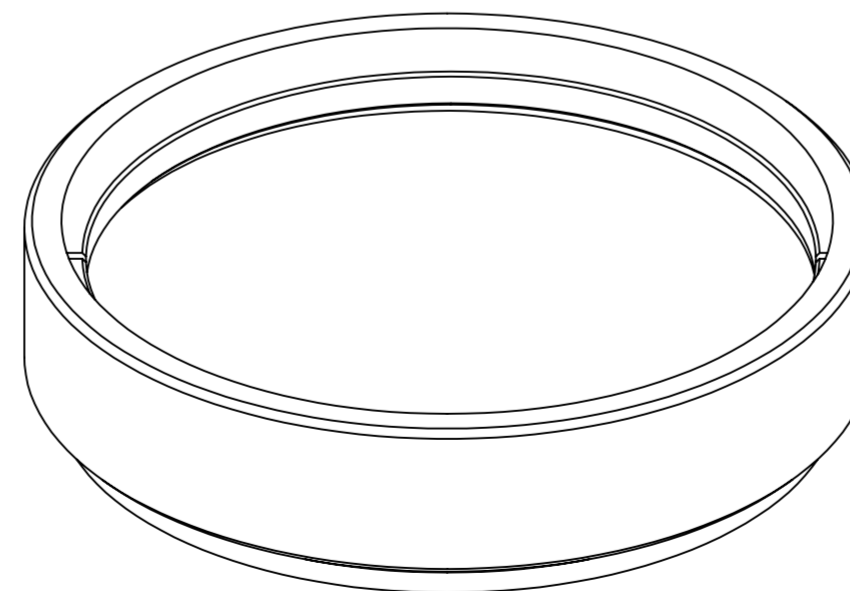
SIDE



FRONT

Ø 47.50 Clear Aperture

Front Thread: 2.035"-40 UNS ▽ 2.6



Extra Large ND (Neutral Density) filter for use with TaperCamD-LCM and Extra Large Sensor cameras (2.035"-40 threads). Includes cap with alignment target. Filter is mounted perpendicular to axis.

ND value specified at 546 nm.

See <https://www.dataray.com/> for additional information.

Part Number	Target ND @546nm	Target ND @675nm
NDL-1	1.17	1
NDL-2	2.34	2
NDL-4	4.67	4



THIRD ANGLE PROJECTION		NAME	DATE	DWG TITLE:	
	DRAWN	SM	180123	DataRay NDXL Filter	A2
	APPROVAL	RD	180123		
COPYRIGHT © 2017 BY DATARAY INC.			REV: 1	SCALE:2:1	SHEET 1 OF 1